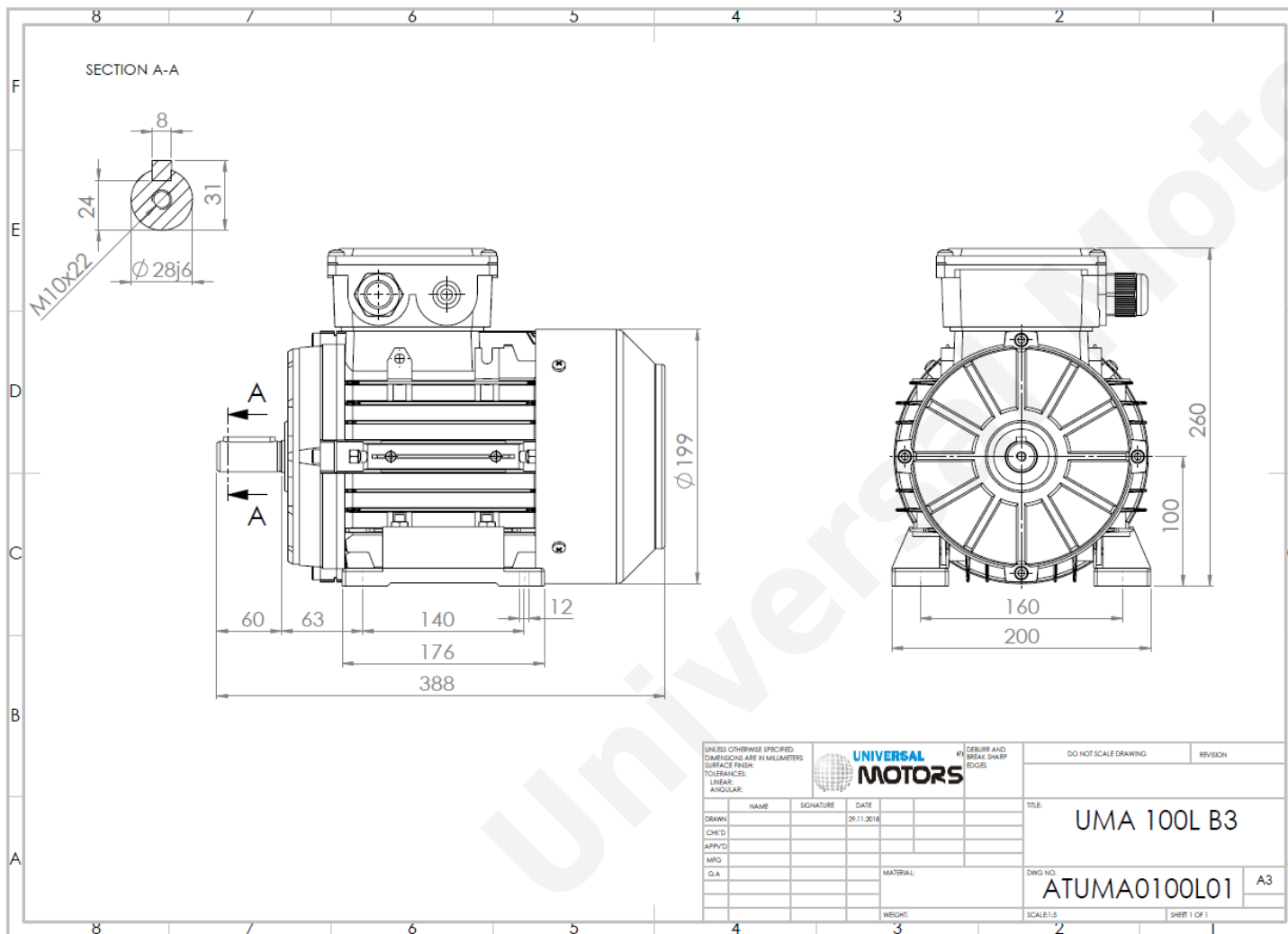




TECHNICAL DATA

Three Phase Electric Motors - Aluminum Frame
 UM3A 100L2-2 IE3
 4 kW / 5.5 Cv
 RPM



Motor type:	UM3A 100L2-2 IE3
Output:	4 kW / 5.5 Cv
Frequency:	50 Hz
Voltage:	400 V
Current:	7.12 A
Power factor (Cos Ø):	0.92
Poles:	2
Insulation class:	F
Temperature rise Class:	B
Efficiency 50%:	88.1 %
Efficiency 75%:	88.8 %
Efficiency 100%:	88.1 %
Torque:	13.1 N.m
Tstarting/Tnominal:	2.8
Istarting/Inominal:	9.1
Tmaximum/Tnominal:	3.3
Noise:	77 Db(A)
Weight:	27.6 Kg
Brake AC:	AC5
Torque Brake DC:	32 N.m
Bearing DE:	6206 2Z
Bearing NDE:	6206 2Z
Torque Brake AC:	40 N.m
Brake DC:	REB-05-12

UNLESS OTHERWISE SPECIFIED: DIMENSIONS ARE IN MILLIMETERS SURFACE FINISH: TOLERANCES: LINEAR: ANGULAR:				UNIVERSAL MOTORS		DO NOT SCALE DRAWING		REVISION	
DRAWN:				DATE:		TITLE:			
CHK'D:				29.11.2016		UMA 100L B3			
APPV'D:									
MRG:									
Q.A.									
MATERIAL:						DWG NO.:		A3	
						ATUMA0100L01			
WEIGHT:						SCALE:1:1		SHEET 1 OF 1	

Regime - S1

Altitude - 1000m

Environment Temperature - 40°C

CONTACTS:

UNIVERSAL MOTORS Tel: +351 252 299 080
 Rua de São Brás,745 Fax: +351 252 299 089
 4480-782 VILA DO CONDE Mail: geral@universalmotors.pt

* References applied only in the UK